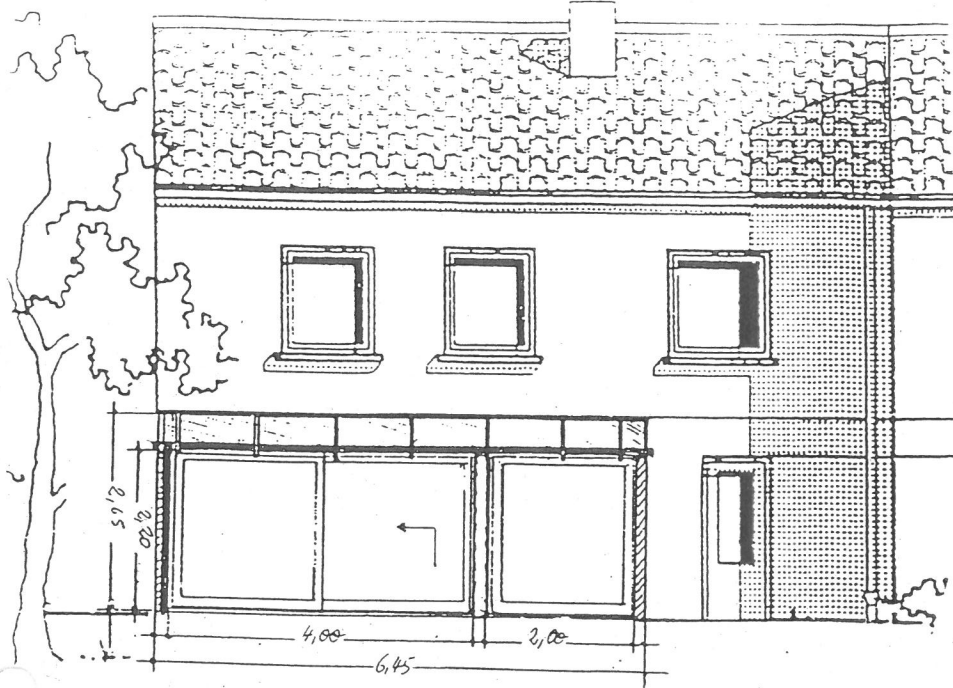
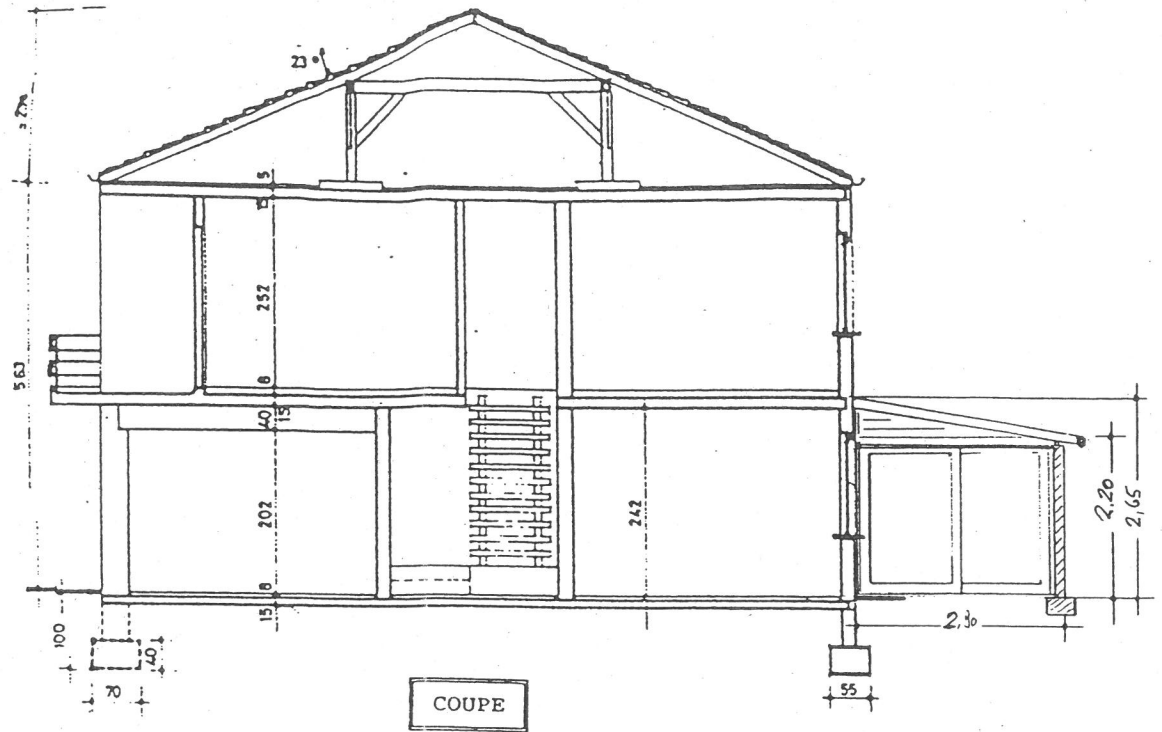
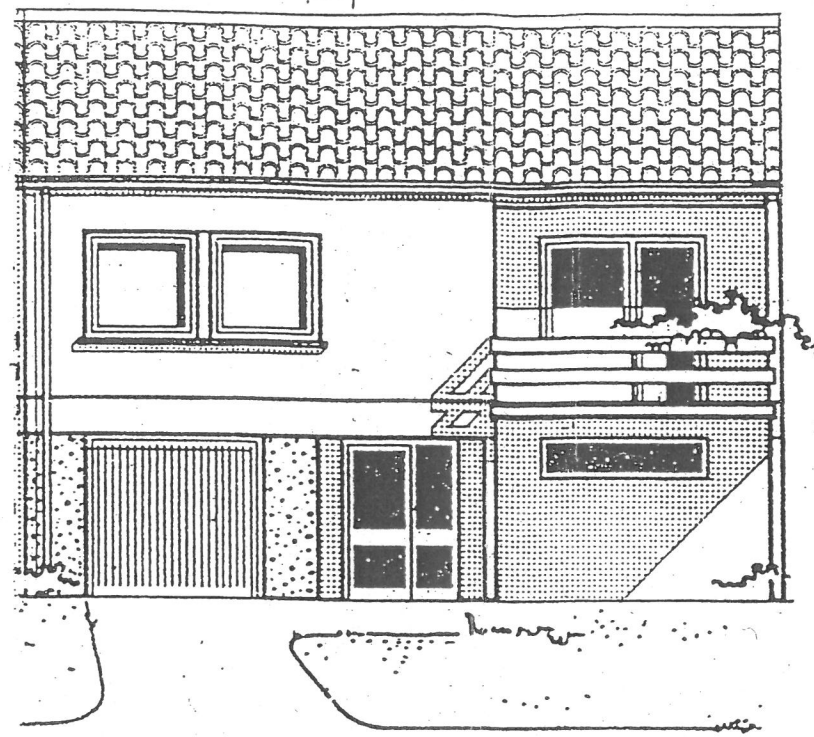


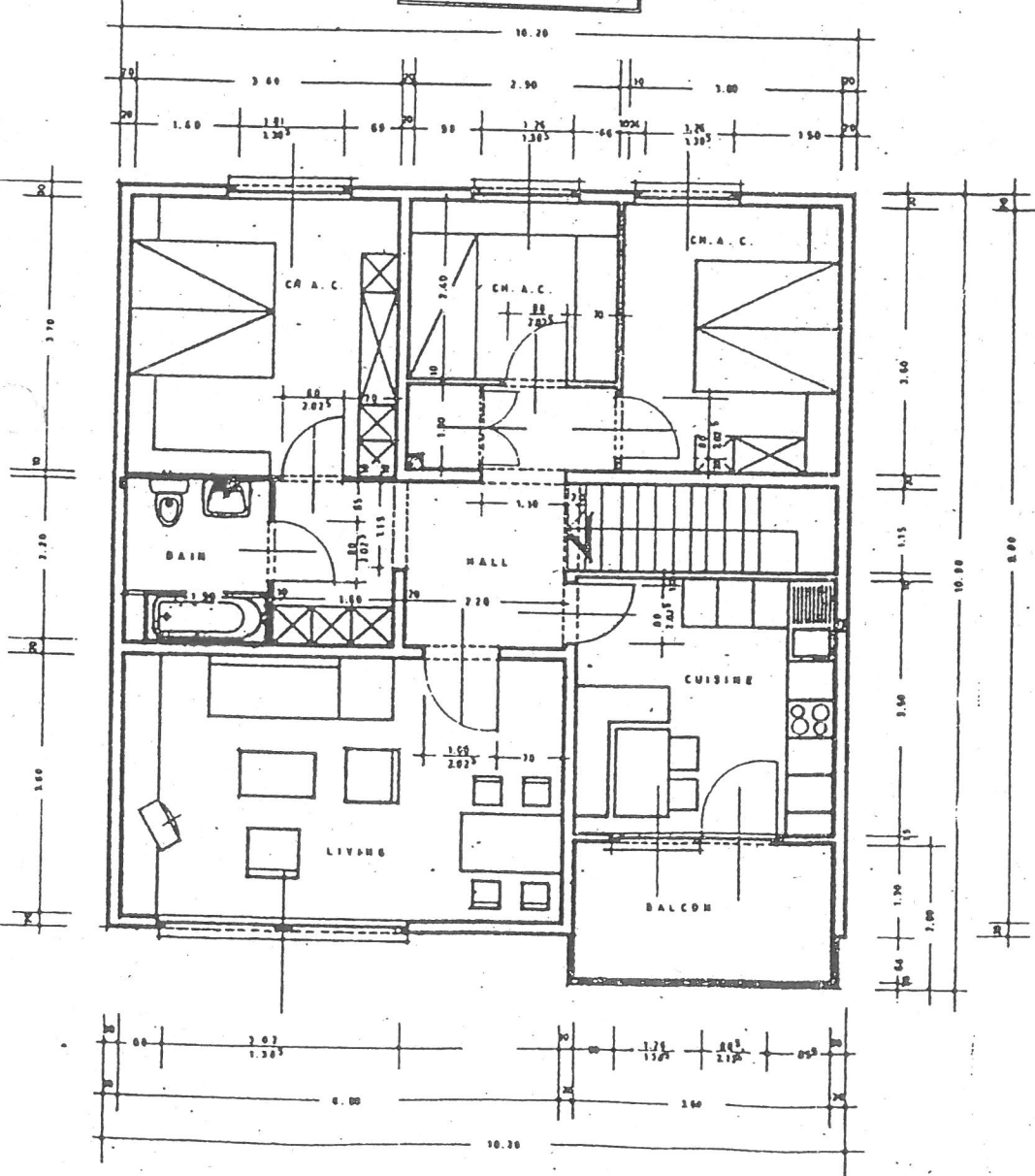
FACADE ARRIERE



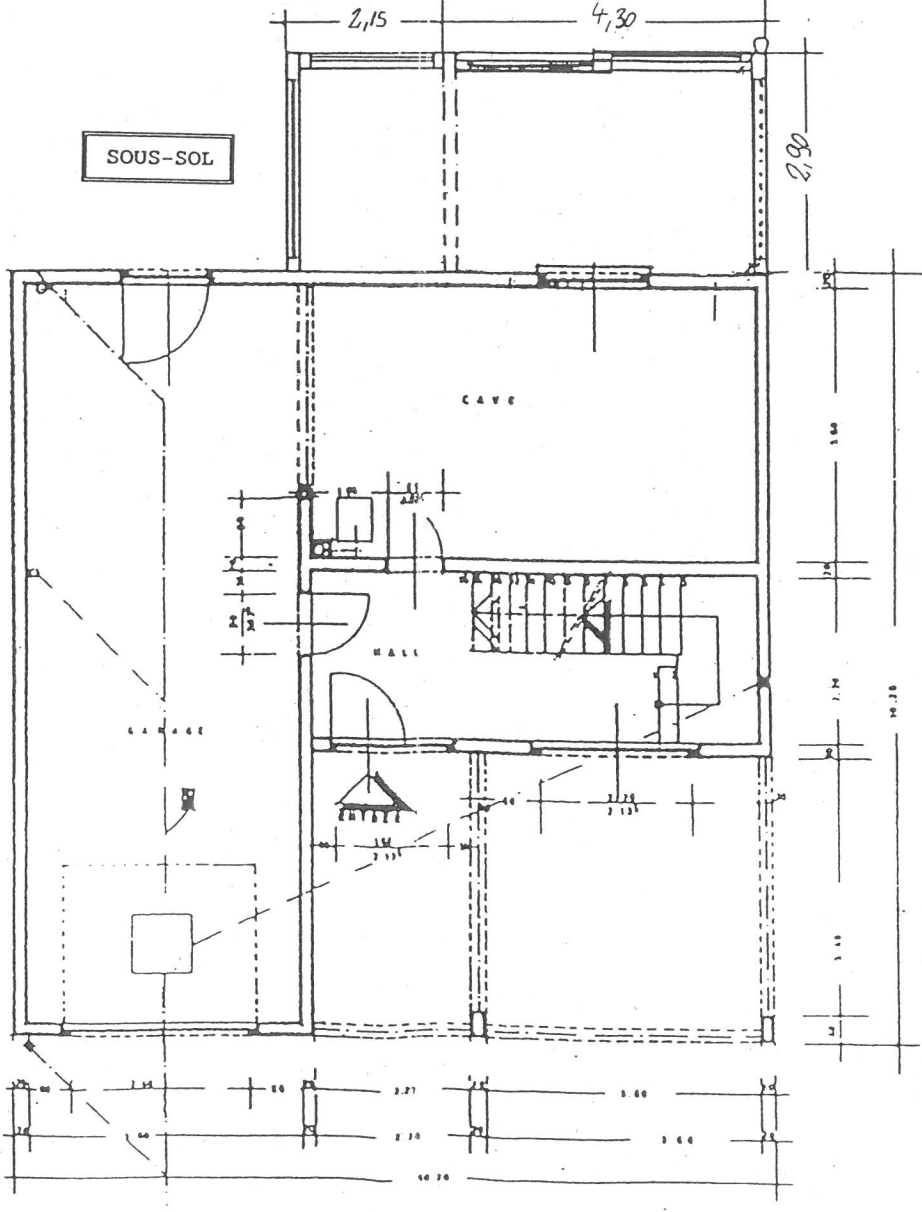
FACADE PRINCIPALE



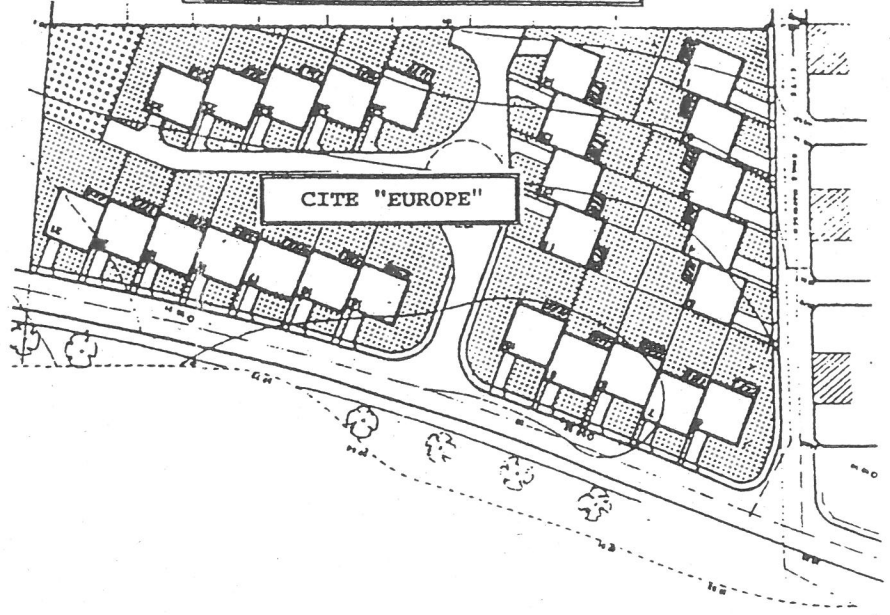
REZ DE CHAUSSEE



SOUS-SOL

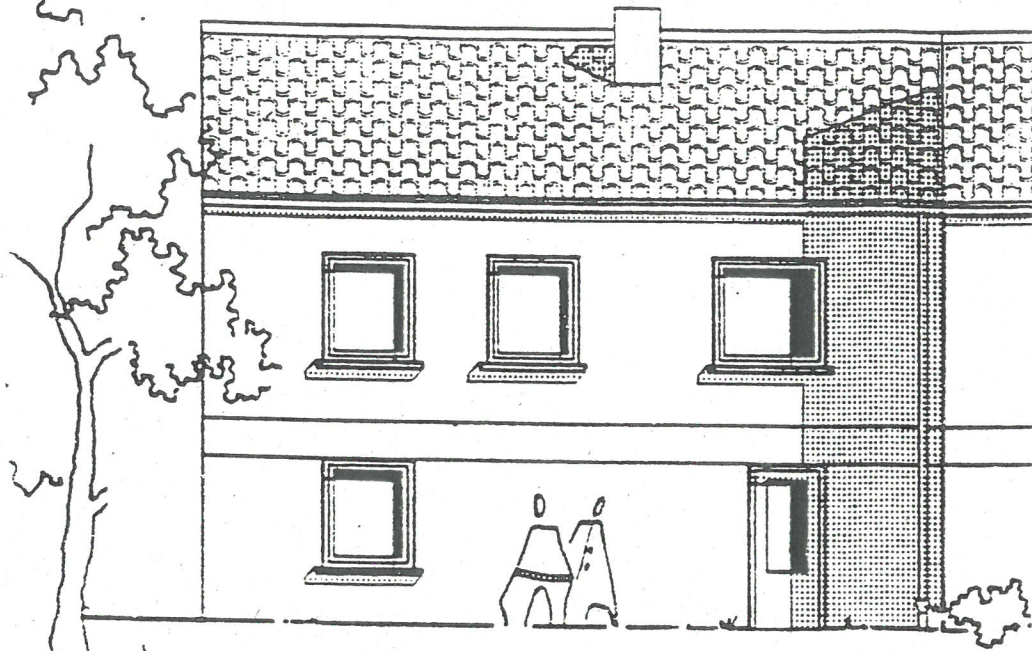


EXTRAIT DE CARTE Ech. 1:1250

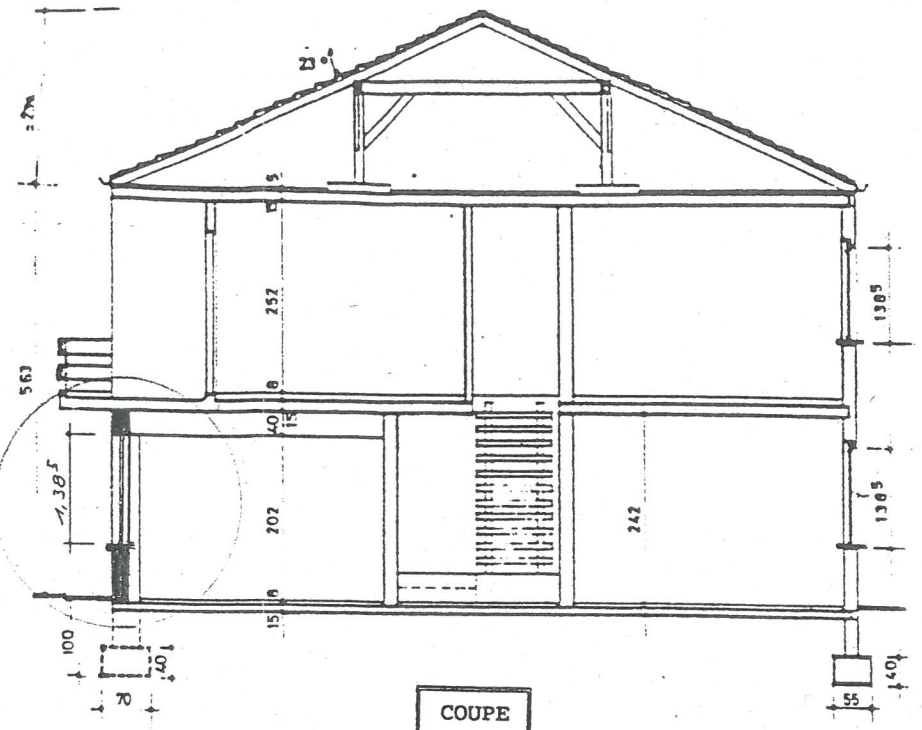
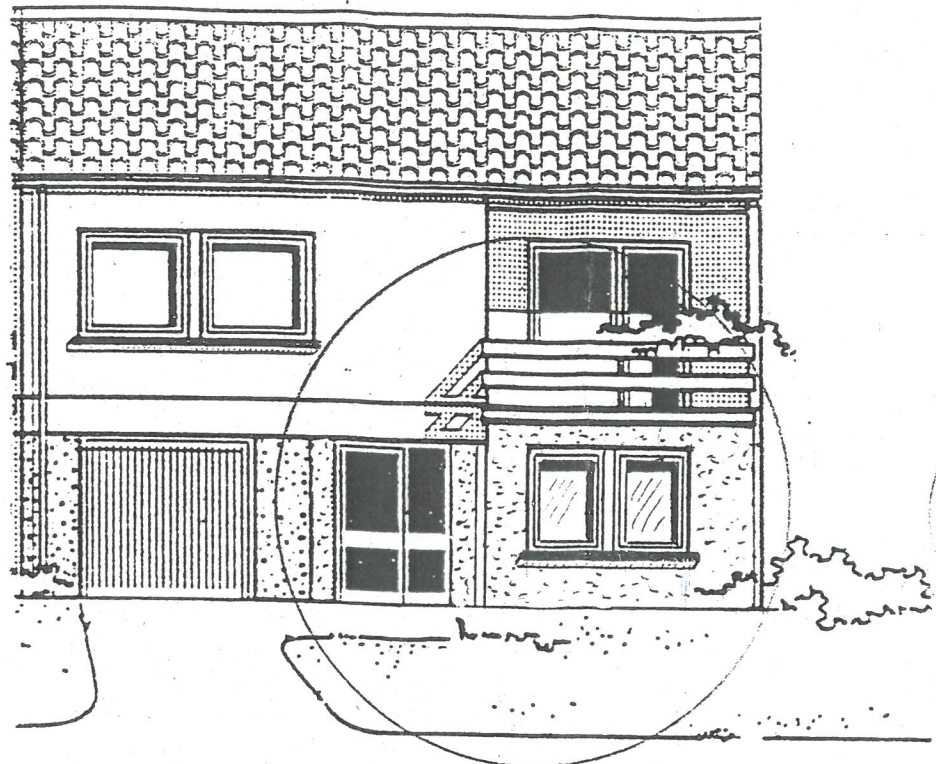


| | |
|---|--|
| ADMINISTRATION COMMUNALE DE SCHIFFLANGE | |
| SERVICE TECHNIQUE | |
| CITE "EUROPE" | Echelle: 1:100 |
| PROJET DE PLAN-TYPE POUR LA CONSTRUCTION D'UNE VÉRANDA | PLAN DE SITUATION Feuille No. 1.2 |
| | DRESSÉ LE 17 MAI 1994 Par: R. Schintgen |

FACADE ARRIERE

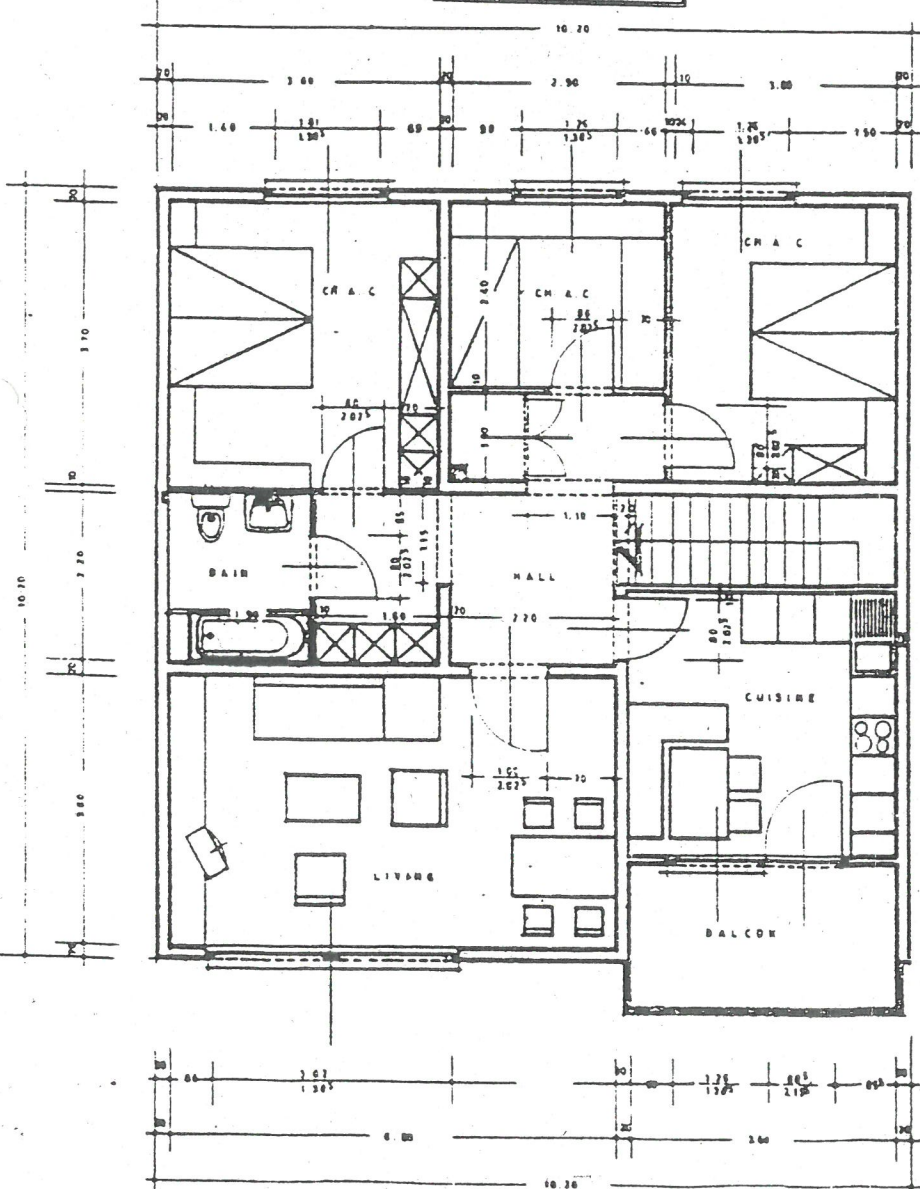


FACADE PRINCIPALE

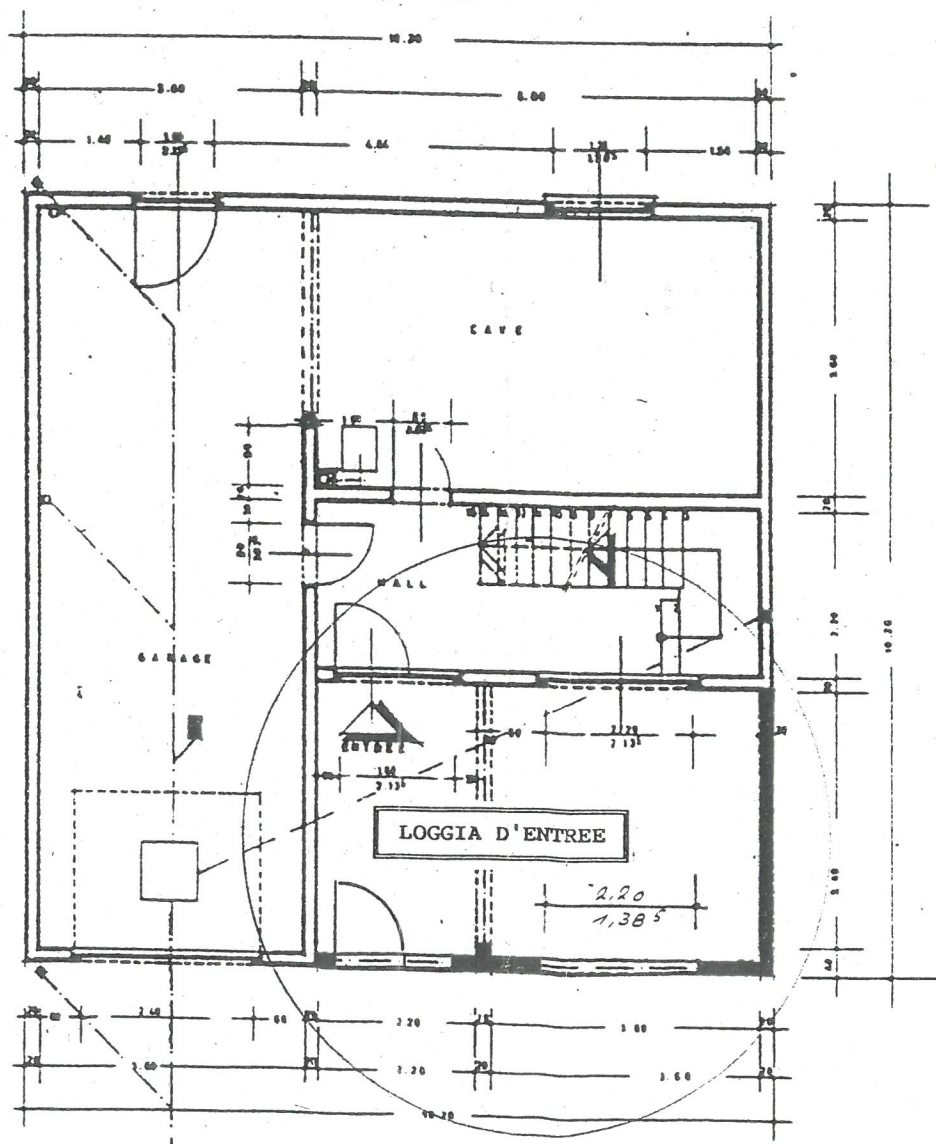


COUPE

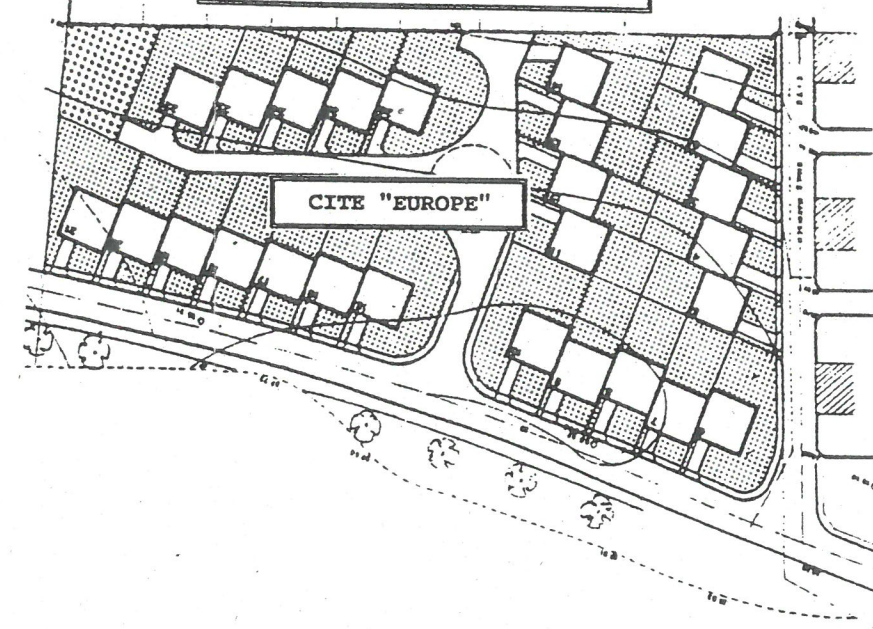
REZ DE CHAUSSEE



SOUS-SOL



EXTRAIT DE CARTE Ech. 1:1250



| | |
|---|--|
| ADMINISTRATION COMMUNALE DE SCHIFFLANGE | |
| SERVICE TECHNIQUE | |
| CITE "EUROPE" | Echelle: 1:100 |
| PROJET DE PLAN-TYPE PCUR | PLAN DE SITUATION Feuille No. 1.2 |
| LA FERMETURE DE LA LOGGIA D'ENTREE | DRESSE LE 25 FEVRIER 1994 Par: R. Schintgen |